



**Five
Rivers®**



Field Gate
School

About us

LOCATION



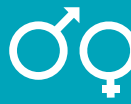
Doncaster

CAPACITY



30

GENDER



Mixed

AGE RANGE



6-18 years

Five Rivers Child Care

- **Education:** Five Rivers Child Care schools provide a therapeutic educational framework that promotes emotional growth alongside academic success, and so encourages holistic child development. Our education provision is fully integrated with our other services.
- **Assessment and Therapy:** We formulate our individually tailored education plans with input from our team of clinicians. They support the children as they experience therapeutic intervention and prepare them for any transitions in their care or treatment.
- **Crisis Intervention:** Children undergoing a crisis must have educational support creating a familiar, stable base while achieving success step by step to rebuild self esteem.
- **Fostering:** Children in care of our fostering service can receive tailored one to one educational support through our outreach service 1 ACE.
- **Residential:** Children in residential care have access to onsite registered schools or receive tailored one to one support through our outreach service 1 ACE.

Our school

Field Gate School is a unique education provision. Based in Doncaster and offering a range of rich learning opportunities for pupils aged 6–18 years. Field Gate is a happy, safe and welcoming environment, which allows our pupils to achieve their own academic targets whilst feeling safe, secure and boosting their self esteem. We are proud of our school, the pupils and the values that underpin all of our work here.

Ofsted

The ammonite diagram represents the education curriculum for Five Rivers Child Care. Our children are at the very centre of the curriculum spiral. We segment our curriculum into seven key sections and support each child to progress through each, building the skills and confidence for them to access life and learning beyond their time with us.



The school day

Our pupils

We believe that all of our children and young people benefit from the consistency and dedication of an integrated team.

- Pupils that have had long/sustained periods of time out of education will be presented with the opportunity to follow a personalised educational timetable, studying the seven areas of learning.
- 1 ACE (Another Chance Education) is our alternative provision; a school without walls. 1 ACE works with children and young people who have had limited success in formal education, or who have struggled in specialised settings. Offering the opportunity to follow a personalised educational timetable, studying the seven areas of learning.
- Pupils are able to address previous trauma and plan for a positive future (mentally, emotionally and academically), by working closely with their assigned Five Rivers educational psychologist.
- Our educational settings provide a supportive environment meaning pupils can build and maintain positive and meaningful relationships with both staff and peers.
- Pupils are in an environment which gives them the chance to re-establish trust in adults and their intentions.
- We believe in our pupils and support them to increase their self-esteem and believe in their abilities.
- A key part of our curriculum is supporting pupils to develop further communication skills and the ability to verbalise needs.
- To help close the gap to achieving age related expectations.

Expectations

Field Gate School has high expectations for all its pupils. The pupils wear uniform and have clearly defined individual behaviour plans that all the team are aware of. We have a system of rewards called 'Cool Points' that focus on presentation, behaviour for learning, effort, excellence and social skills. Practice is reflective and restorative and implemented in a consistent and fair manner.

English as an Additional Language (EAL) and Special Educational Needs and Disability (SEND)

Further information can be provided by the school concerning the arrangement for supporting pupils with English as their second language. All information, if requested, can be made available prior to any meeting. Our aim is to identify and support every special need identified or diagnosed. Every child will be offered a weekly therapy session and educational resources will be tailored to meet the needs of the pupils. All pupils will work on an individualised timetable designed to meet their specific needs.



Enrichment

We believe that learning extends well beyond the classroom so Field Gate School offers all pupils access to a range of enrichment activities that supports them to be successful in life. Numerous extracurricular activities take place at lunchtimes and during the school day. These activities provide opportunities for pupils to learn new skills, build positive relationships and develop their confidence, teamwork and communication skills.

Enrichment activities on offer include:

- Trips and visits
- Computing and gaming
- Art and design
- Cooking
- Sport
- Music and drumming qualifications
- Outdoor education
- Specific child centred interests: eg trains and railways

Our curriculum

The curriculum

Every day is unique and individual to each child, taking account of their learning needs and interests. Our approach to learning is thematic, with a core theme each term, connecting the seven curriculum areas of Literacy, Numeracy, Science and Technology, The World Around Us, Creativity, Skills for Life alongside Physical Education and Wellbeing.

Within the school day there is a focus on core learning of Literacy, Numeracy, Science and Technology. Which is supplemented with lessons that focus on Wellbeing and Vocational Studies. Within these curriculum areas, students can focus on their own personal development.

We aim to provide a broad and balanced curriculum that is pupil centred, holistic and develops the whole child. Emotional wellbeing is paramount, and our pupils have the opportunity to access therapeutic sessions, work on emotional regulation and wellbeing.

These sessions may include work on The Zones of Regulation, pastoral sessions and tutor sessions to develop emotional literacy and resilience in our pupils. We also have daily SMSC sessions where we look at current affairs and news around the world to generate discussion and develop knowledge in key areas such as British Values, democracy, radicalisation, CSE, etc.

Field Gate School is a registered exam base, so all pupils can work towards accredited courses, e.g. Entry Level, AQA Unit Awards, ASDAN Awards, CoPE and GCSE's. This is complemented by vocational studies and life skills.

▼ **Example timetable** (All timetables are personalised to the pupil; the below example demonstrates a range of opportunities)

		LESSON 1		LESSON 2		LESSON 3	LESSON 4	
	9.00 – 9.20	9.20 – 10.20		10.40 – 11.40		12.30 – 1.30	1.30 – 2.30	2.30 – 3.00
MONDAY	SMSC	Literacy	Break 10.20 – 10.40	Skills for Life	Lunch 11.40 – 12.30	Science and Technology	Science and Technology	Enrichment
TUESDAY	SMSC	Literacy		Numeracy		Creativity	Creativity	Enrichment
WEDNESDAY	SMSC	Literacy		Creativity		The World Around Us	Skills for Life	Enrichment
THURSDAY	SMSC	Literacy		Numeracy		Science and Technology	PE	Enrichment
FRIDAY	SMSC	The World Around Us		Creativity		Skills for Life	PE	Enrichment

Assessment

Pupils at Field Gate School will be regularly assessed, both formally and informally, to ensure that they are making progress academically, socially and emotionally.

Assessment is a continuous process at this school and we assess for different reasons:

- To identify specific learning strengths and weaknesses
- To indicate the next step in the learning process
- To provide a vehicle for feedback, diagnosis and action
- To measure attainment within a year group and/or against established criteria
- To highlight and record positive achievement
- To encourage students to take ownership of their own learning and personal development through target setting and self assessment
- To help the teacher to evaluate the teaching programme
- To assist in the evaluation of the school curriculum
- To inform parents/carers of their child's progress, attainment and achievement
- To provide employers, Further Education institutions and other outside agencies with a full picture of students' attainment, skills, attributes and achievements

The following table summarises the summative and formative practices, which take place in this school.

Summative Assessment (Measuring Attainment)	Formative Assessment (Enabling Achievement)
Statutory tests	Clarifying learning objectives and success criteria at the planning stage
Non-statutory 'optional' tests	Sharing learning objectives and success criteria with students
External examinations	Appropriate and effective questioning
Deciding teacher assessment levels	Focusing oral and written feedback around the learning objective
Recall questions which establish current knowledge	Raising student efficacy



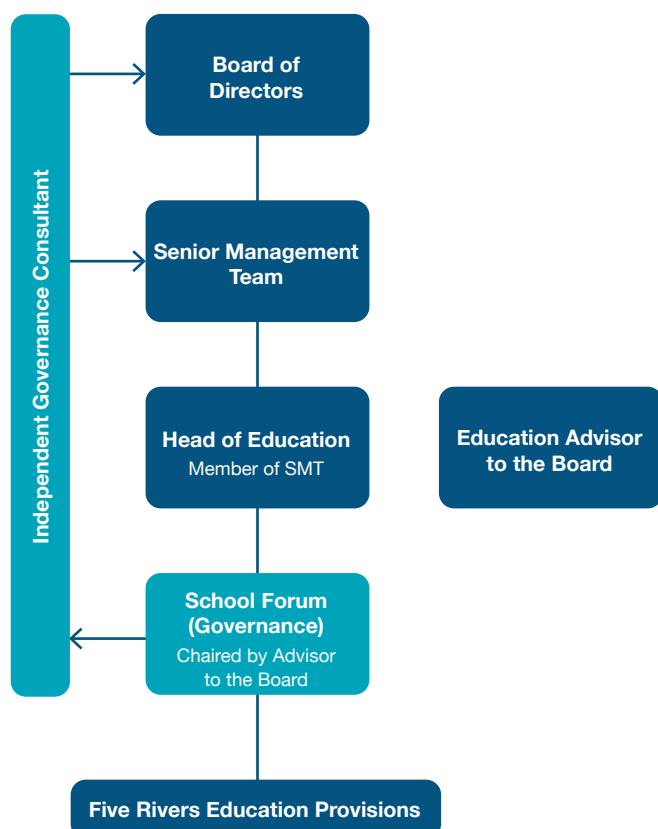
The school forum

On a termly basis, a school forum convenes at Five Rivers Child Care's Head Office in Salisbury. This meeting forms part of our governance arrangements and has a set agenda.

The school forum is made up of a number of people from within Five Rivers Child Care and independents, with some members being regular attendees, and others attending as and when necessary.

Members include:

- Education Senior Leaders
- Heads of education provisions
- Key members from other Five Rivers Child Care departments are also invited



Our spacious grounds at Field Gate School

Policies

Admissions

Children can be admitted from the age of 6 years old and can be educated at Field Gate School until 18 years old. The Key Stage 5 provision is to support emotional growth, retake GCSE examinations or entry level certificates in readiness to support a transition to college or the world of work.

Pupils are referred to the school from the local education authority, social care, SEN department. Local schools and academies can buy places for their pupils who will then be dual registered or will remain on the role of their main school. Full time and part time packages are available. Parents can request a place at the Field Gate School but must secure funding from the local authority.

Due to the highly vulnerable nature of our pupils a risk matching process for all new applicants to the school is undertaken. If the risk assessment of the addition of new pupils would put existing pupils at excessive risk then a place could not be offered at that time but may become available if the risk assessment changes significantly.

Safeguarding procedure

Field Gate School implements strict safeguarding procedures and all staff are subject to rigorous background checks which are routinely updated. All DBS certificates are seen and identification documents, proof of address, etc are held both at Field Gate School and at our central HR department. An active policy of whistle blowing is encouraged amongst all staff. The full safeguarding policy is available on request.

Behaviour

We have clearly defined expectations for behaviour at Field Gate School which include areas such as:

- Treating others and yourself with respect
- Being in school on time
- Trying your best to improve
- Respecting property

Full policies are available on request and can be found on the website.

The behaviour policy at Field Gate School is implemented by all adults who work at Field Gate School and is done in a consistent and fair manner. Expectations of student behaviour and formal uniform are explained clearly and thoroughly when a pupil enrolls.

Exclusions

Field Gate School acts to champion the right of all children to receive a high quality education. We work therapeutically with any child at risk of exclusion to overcome any barriers to learning through skilled problem solving with a range of partners. A timetable intervention of teaching base, teaching team, timetabled hours and timetable content are recognised strategies to support them to better build resilience and manage behaviours. All are used appropriately and with whole of school discussion and support. There is no exclusion from education.

Complaints procedure

Field Gate School has a robust complaints procedure where any complaints made are taken with the utmost seriousness and investigated accordingly. Field Gate School and Five Rivers Child Care have a complaints policy and procedure which is available on request.

Field Gate School

Further details are available on request

Lead Teacher: Rebecca Thompson | Rebecca.Thompson@five-rivers.org

Proprietorial Body: Five Rivers Child Care

Chairman: David Howard

If you would like to discuss a placement within our Education service,
please contact our referrals team for more information: **0800 3898708** (Option 3)



Head Office: Five Rivers Child Care Limited
47 Bedwin Street, Salisbury, Wiltshire SP1 3UT

0800 389 8708
education@five-rivers.org
five-rivers.org