



**Five Rivers[®]
Education**

A close-up photograph of a young child with a joyful expression, showing their teeth. The child's hands are framing their face. Below the child's chin, the top edge of an open book is visible, showing a colorful illustration of a landscape with a large black silhouette of a person or object. The background is dark and out of focus.

Endeavour House School

Excellence. Helpfulness. Self-Belief.

About us



Our school

Endeavour House School is a special educational needs school (SEN) that has a unique, relaxed and focused atmosphere. It is a vibrant community providing specialist education for vulnerable pupils unable to sustain a mainstream placement. Our goal is to create a learning environment where emotional well-being and academic success walk hand-in-hand, enabling each child to succeed.



Ofsted

Endeavour House School was rated Good by Ofsted in 2022. "This is a welcoming and friendly school where pupils feel valued and safe. Pupils are supported well by staff and as a result are happy to come to school." – Ofsted 2022

Five Rivers Child Care

- **Education:** Five Rivers Child Care schools provide a therapeutic educational framework that promotes emotional growth alongside academic success, and so encourages holistic child development. Our education provision is fully integrated with our other services.
- **Assessment and Therapy:** We formulate our individually tailored education plans with input from our team of clinicians. They support the children as they experience therapeutic intervention and prepare them for any transitions in their care or treatment.
- **Crisis Intervention:** Children undergoing a crisis must have educational support creating a familiar, stable base while achieving success step by step to rebuild self esteem.
- **Fostering:** Children in care of our fostering service can receive tailored one to one educational support through our outreach service 1 ACE.
- **Residential:** Children in residential care have access to onsite registered schools or receive tailored one to one support through our outreach service 1 ACE.

Visions and values

At Endeavour House School we recognise that some children have adverse childhood experiences, therefore we seek to enable the children to succeed, no matter what their starting point. We aim to provide an inclusive curriculum, taking every opportunity to celebrate the children's successes and cultural diversity. We have high expectations for our children, hence supporting their social, emotional, and academic development. We encourage the children to "read the word and the world" (Friere,1972) so that they can be successful in their society.

Our commitments:

- To use a trauma informed approach to learning
- To seek excellence in teaching and learning
- To provide children with opportunities to learn to read and read to learn
- To develop a critical mind and use evidence to justify their approach
- To provide a safe place and a safe space to foster learning and achievements
- To support children to fulfil their potential

The school day

Our pupils

All pupils follow a timetable that suits the needs and capabilities of each individual, as well as meeting the national curriculum and SMSC requirements.

Pupils have their own secure computer access developed with Five Rivers Child Care's external IT consultancy experts. Pupils follow a school day structure with a 9am check-in and formal lessons starting around 9:20am. The day closes with a wind-down session called Celebration. This is a time to discuss any issues and celebrate achievements. It gives an opportunity to draw a line under any issues so they do not continue into the evening, and discuss any strategies to avoid repeating mistakes.

As an incentive to learn we award points for punctuality, behaviour and effort each day, as well as rewarding additional personalised targets chosen to eradicate unwanted behaviours. Points are displayed in the classroom and tracked electronically for analysis and contribute to pupils earning rewards.

Core principles

We encourage pupils to be respectful, independent and confident through a curriculum that is achievable and relevant to each pupil's stage of development and ability. Pupils will develop the following knowledge, understanding and skills:

Respect:

- Understand own and others culture, beliefs and traditions
- Understand the meaning of community and how to be a valued member of the community
- Recognise injustice, prejudice and discrimination and learn to challenge in these areas
- Develop respect for self as well as others and use encouraging vocabulary for all

Independence:

- Become problem solvers and mentors
- Develop thinking and planning skills
- Be able to ask questions, appreciate information and learn from mistakes
- Be willing to try new things
- Know how to work collaboratively and how to seek support

Confidence:

- Develop emotional awareness
- Develop safe and secure friendships
- Develop healthy confidence, self-esteem and self-image
- Understand the many aspects of a healthy and happy lifestyle

English as an Additional Language (EAL) and Special Educational Needs and Disability (SEND)

Further information can be provided by the school concerning the arrangement for supporting pupils with English as their second language. All information, if requested, can be made available prior to any meeting. Our aim is to identify and support every special need identified or diagnosed. Every child will be offered a weekly therapy session and equally educational resources will be tailored to meet the needs of the pupils. All pupils will work on an individualised timetable designed to meet their specific needs.

Enrichment

School trips include visits to places of worship, such as a Church, Mosque, Sikh temple and a local Synagogue to raise awareness of diversity and difference in the wider community. We also arrange trips to an adventure centre, a local organic farm and museums to enrich the education and daily lives of the pupils. In addition, children are given the opportunity to visit places where they can develop entrepreneurship, for example KidZania.

Further enrichment is provided, for example, through talks with the local PCSOs on the implications of bullying and violent behaviours, and a visit to the local fire station. These allow our pupils to have a better understanding of the real world and the consequences of making the wrong choices in life.

Additionally, extra-curricular activities will be offered on site, such as music and singing lessons where pupils have the opportunity to learn to perform a song of their choosing and, if appropriate, learn basic guitar or keyboard playing. There are local facilities where a wide range of sports, can be accessed and individual's interest are encouraged by agreement with staff.

We will hold cultural days where a different culture or religion from around the world is examined and various activities are held to promote our agenda of increasing equality and diversity in the school and workplace.

Other enrichment opportunities can be explored if a student expresses an interest in a specific area. As a school we will support the children to develop their interests and explore activities that will support their overall development.

WATCH OUR VIDEO HERE

www.five-rivers.org/education/schools/endeavour-house/

Our curriculum

The curriculum

The curriculum consists of planned activities that are organised to promote learning and development. It includes activities meeting the formal requirements of the National Curriculum, as well as essential opportunities to provide a nurturing programme, tailored to the complex needs of all pupils.

We ensure that all pupils receive a broad, balanced education that takes into account individual needs, backgrounds and abilities. We aim to teach our pupils how to develop into happy, confident and responsible people, who can trust and co-operate with others while developing their understanding and skills so that they can reach their full potential.

Subjects covered are; English, Mathematics, Science, History, Geography, Art, Design and Technology, Music, ICT, Religious Education and PSHE. Physical Education (PE) is covered separately with lessons taking place weekly. The curriculum is covered in this way to encourage engagement with learning and to make lessons more accessible for pupils who are disengaged with or demotivated by school.

Enhanced curriculum

Pupils lives are enriched with a programme of educational school trips and PE is broadened with visits to various sporting institutions/environments. We will invite speakers from the community to raise awareness of social issues and explore food and beliefs from other cultures. Creative and physical development will be encouraged with music and singing, swimming and library visits to promote and improve reading practice.

“We encourage the children to *read the words and read the world* (Friere, 1972), so that they can be successful in their society.”

▼ **Example timetable** (All timetables are personalised, this demonstrates a range of opportunities)

	MONDAY	TUESDAY	WEDNESDAY	THURSDAY	FRIDAY
MORNING	Reading, Maths, Assembly/SMSC discussions	Reading, Sensory activities, Assembly/SMSC discussions	Reading, Offsite education, Assembly/SMSC discussions	Reading, Maths, Assembly/SMSC discussions	Reading, PSHCE, Assembly/SMSC discussions
Break					
MORNING	English, History, Geography	English (reading comprehension), Maths	Offsite education	English, Computing	Sensory activities/ technology
Lunch					
AFTERNOON	Science/R.E/PSHC Celebration/Award Whole school novel reading	Music, Art Celebration/Award Whole school novel reading	Offsite education Celebration/Award Whole school novel reading	PE, Swimming Celebration/Award Whole school novel reading	Reward time/ 15 minute fortnightly school council meeting Celebration/Award Whole school novel reading

Assessment

Pupils at Endeavour House School are regularly assessed, both formally and informally, to ensure that they are making progress academically, socially and emotionally.

As part of the therapeutic process undertaken at Endeavour House School, it is deemed particularly important to assess our pupils and communicate this assessment with the team.

Pupils are assessed in a number of ways, at regular intervals, which include:

- Daily assessment through observation and class discussions
- Regular quizzes and academic challenges
- Weekly homework, depending on the current theme. This changes on a half termly basis
- Weekly and end of unit assessments in each subject via our assessment tools

Assessment results are reported in a number of ways:

- Marking of pupils' work, so that they are aware of ways to improve
- Weekly summaries of pupils' progress in a number of areas
- Termly reports for social workers
- LAC reports as part of the overall Endeavour House School process
- Governance reports to our board

Our pupils visit a local farm once a week as part of our off-site education



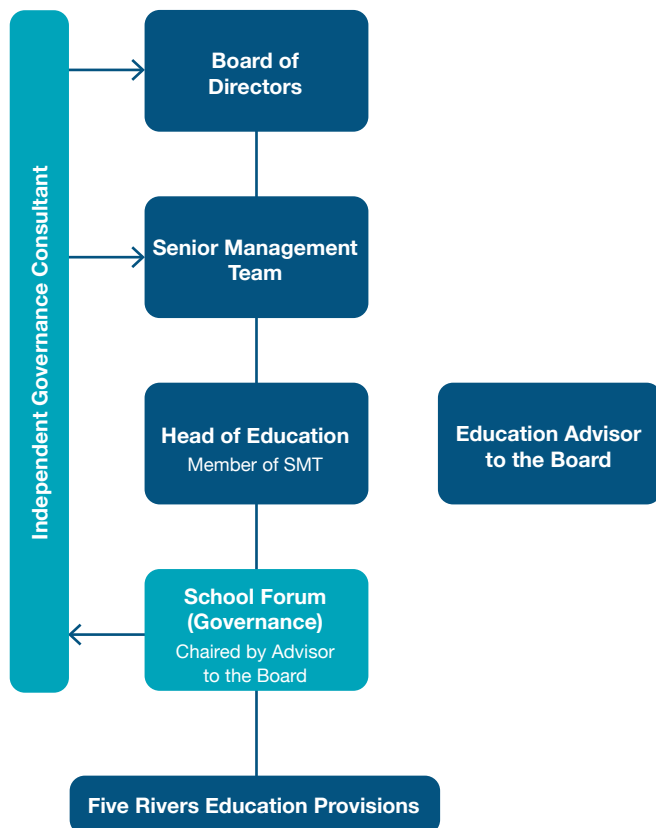
The school forum

On a termly basis, a school forum convenes at Five Rivers Child Care's Head Office in Salisbury. This meeting forms part of our governance arrangements and has a set agenda.

The school forum is made up of a number of people from within Five Rivers Child Care and independents, with some members being regular attendees, and others attending as and when necessary.

Members include:

- Education Senior Leaders
- Heads of education provisions
- Key members from other Five Rivers Child Care's departments are also invited



Cookery is taught as part of a varied curriculum

Policies

Safeguarding procedure

Endeavour House School implements strict safeguarding procedures and all staff are subject to rigorous background checks which are updated. All DBS certificates are seen and identification documents, proof of address, etc. are held both at Endeavour House School and at our central HR department. An active policy of whistle blowing is encouraged amongst all staff. The full safeguarding policy is available on request.

Behaviour

We have clearly defined expectations for behaviour at Endeavour House School which include areas such as:

- Treating others and yourself with respect
- Being in school on time
- Trying your best to improve
- Respecting property

The full policies are available on request.

The behaviour policy at Endeavour House School is implemented in a consistent and fair manner by both care and education staff in co-operation. Expectations of student behaviour are explained clearly and thoroughly at the beginning of a placement. A formal uniform is expected and explained to the pupils at the beginning of a placement.

“As a school we will support the children to develop their interest and explore activities that will support their overall development.”

Exclusions

Endeavour House School acts to champion the rights of all children to receive a high quality education. We will work therapeutically with any child at risk of exclusion to overcome any barriers to learning through skilled problem solving with a range of partners. A timetable intervention of teaching base, teaching team, timetabled hours and timetable content are recognised strategies to support them to better build resilience and manage behaviours. All are used appropriately and with whole of school discussion and support.

Complaints procedure

Endeavour House School has a robust complaints procedure where any complaints made are taken with the utmost seriousness and investigated accordingly. Endeavour House School and Five Rivers Child Care have a consistent complaints policy and procedure which is available on request.

English as an Additional Language

Where required, English as an Additional Language (EAL) additional needs will be suitably met with support from LA translation services.

Endeavour House School

Further details are available on request

Headteacher: Ann Marie Allen | ann-marie.allen@five-rivers.org

Proprietorial Body: Five Rivers Child Care

Chairman: David Howard

If you would like to discuss a placement within our Education service,
please contact our referrals team for more information: **0800 3898708** (Option 3)



Head Office: Five Rivers Child Care Limited
47 Bedwin Street, Salisbury, Wiltshire SP1 3UT

0800 389 8708
education@five-rivers.org
five-rivers.org