



**Five Rivers<sup>®</sup>  
Education**

# **Willow View School**

High-quality education



# About us



“I have seen so much progress since you have been working with him. Not just in terms of his behaviour but also with his academic progress.” **Parent**

## Five Rivers Child Care

- **Education:** Five Rivers Child Care schools provide a therapeutic educational framework that promotes emotional growth alongside academic success and so encourages holistic child development. Our education provision is fully integrated with our other services.
- **Clinical Services:** We formulate our individually tailored education plans with input from our team of clinicians. They support the children as they experience therapeutic intervention and prepare them for any transitions in their care or treatment.
- **Crisis Intervention:** Children undergoing a crisis must have educational support creating a familiar, stable base while achieving success step by step to rebuild self-esteem.
- **Fostering:** Children in care of our fostering service can receive tailored one to one educational support through our outreach service 1 ACE.
- **Residential:** Children in residential care have access to onsite registered schools or receive tailored one to one support through our outreach service 1 ACE.

## Our school

Willow View School is a small, unique education provision. Based in Rochdale and offering a range of rich learning opportunities for pupils aged 6–18 years. Willow View is a happy, safe and welcoming environment, which allows our pupils to achieve their own academic targets whilst feeling safe, secure and boosting their self-esteem. We are proud of our school, the pupils and the values that underpin all of our work here.



## Ofsted

Willow View School was rated Good by Ofsted in 2023. “Staff foster positive relationships with pupils. They support pupils who have previously experienced trauma with a range of effective therapeutic approaches. This helps pupils to re-engage with their education.” – Ofsted 2023

# The school day

## Our pupils

We believe that all of our children and young people benefit from the consistency and dedication of an integrated team.

- Pupils that have had long/sustained periods of time out of education will be presented with the opportunity to follow a personalised educational timetable, studying the seven areas of learning.
- 1 ACE (Another Chance Education) is our alternative provision; a school without walls. 1 ACE works with children and young people who have had limited success in formal education, or who have struggled in specialised settings. Offering the opportunity to follow a personalised educational timetable, studying the seven areas of learning.
- Pupils are able to address previous trauma and plan for a positive future (mentally, emotionally and academically), by working closely with their assigned Five Rivers educational psychologist.
- Our educational settings provide a supportive environment meaning pupils can build and maintain positive and meaningful relationships with both staff and peers.
- Pupils are in an environment which gives them the chance to re-establish trust in adults and their intentions.
- We believe in our pupils and support them to increase their self-esteem and believe in their abilities.
- A key part of our curriculum is supporting pupils to develop further communication skills and the ability to verbalise needs.
- To help close the gap to achieving age related expectations.

## Expectations

Willow View School has high expectations for all its pupils. The pupils wear uniform and have clearly defined individual behaviour plans that all the team are aware of. We have a system of rewards where pupils can earn points that focus on presentation, behaviour for learning, effort, excellence and social skills. Practice is reflective and restorative and implemented in a consistent and fair manner.

## English as an Additional Language (EAL) and Special Educational Needs and Disability (SEND)

Further information can be provided by the school concerning the arrangement for supporting pupils with English as their second language. All information, if requested, can be made available prior to any meeting.

Our aim is to identify and support every special need identified or diagnosed. We offer direct therapy to our pupils with our team of trained therapists and educational resources will be tailored to meet the needs of the pupils. All pupils will work on an individualised timetable designed to meet their specific needs.



## Enrichment

We believe that learning extends well beyond the classroom so Willow View School offers all pupils access to a range of enrichment activities that supports them to be successful in life. Numerous extracurricular activities take place at lunchtimes and during the school day. These activities provide opportunities for pupils to learn new skills, build positive relationships and develop their confidence, teamwork and communication skills.

Enrichment activities on offer include:

- Trips and visits
- Art and design
- Cooking
- PE/Action Sports
- DJ and Music Production Awards
- Outdoor education/Farm Visits
- Equine Therapy
- Animal Assisted Therapy
- Swimming Lessons
- Specific child centred interests: eg trains and railways
- Weekly Rewards Trips
- End of Term Trips

# Our curriculum

## The curriculum

Every day is unique and individual to each child, taking account of their learning needs and interests. Our approach to learning is thematic, with a core theme each term, connecting the seven curriculum areas of Literacy, Numeracy, Science and Technology, The World Around Us, Creativity, Skills for Life alongside Physical Education and Wellbeing.

Within the school day there is a focus on core learning of Literacy, Numeracy, and Science. Which is supplemented with lessons that focus on Wellbeing and Vocational Studies. Within these curriculum areas, students can focus on their own personal development.

We aim to provide a broad and balanced curriculum that is pupil centred, holistic and develops the whole child. Emotional wellbeing is paramount, and our pupils have the opportunity to access therapeutic sessions, work on emotional regulation and wellbeing.

These sessions may include work on The Zones of Regulation, pastoral sessions and tutor sessions to develop emotional literacy and resilience in our pupils. We also have daily SMSC sessions where we look at current affairs and news around the world to generate discussion and develop knowledge in key areas such as British Values, democracy, radicalisation, CSE, etc.

All pupils can work towards accredited courses, e.g. Entry Level, AQA Unit Awards, ASDAN Awards, CoPE functional skills and GCSE's. This is complemented by vocational studies and life skills. We also outsource external providers for areas of particular interest to our pupils such as construction, motor mechanics and hair and beauty.

▼ **Example timetable** (All timetables are personalised to the pupil; the below example demonstrates a range of opportunities)

		LESSON 1		LESSON 2		LESSON 3	LESSON 4	
	9.00 – 9.20	9.20 – 10.20		10.40 – 11.40		12.30 – 1.30	1.30 – 2.30	2.30 – 3.00
MONDAY	SMSC/ Thrive	Literacy	Break 10.20 – 10.40	Skills for Life	Lunch 11.40 – 12.30	Science and Technology	Science and Technology	Enrichment
TUESDAY	SMSC/ Thrive	Literacy		Numeracy		Creativity	Creativity	Enrichment
WEDNESDAY	SMSC/ Thrive	Literacy		Creativity		The World Around Us	Skills for Life	Enrichment
THURSDAY	SMSC/ Thrive	Literacy		Numeracy		Science and Technology	PE	Enrichment
FRIDAY	SMSC/ Thrive	The World Around Us		Creativity		Skills for Life	PE	Enrichment

# Assessment

Pupils at Willow View School will be regularly assessed, both formally and informally, to ensure that they are making progress academically, socially and emotionally.

Assessment is a continuous process at this school and we assess for different reasons:

- To identify specific learning strengths and weaknesses
- To indicate the next step in the learning process
- To provide a vehicle for feedback, diagnosis and action
- To measure attainment within a year group and/or against established criteria
- To highlight and record positive achievement
- To encourage students to take ownership of their own learning and personal development through target setting and self assessment
- To help the teacher to evaluate the teaching programme
- To assist in the evaluation of the school curriculum
- To inform parents/carers of their child's progress, attainment and achievement
- To provide employers, Further Education institutions and other outside agencies with a full picture of students' attainment, skills, attributes and achievements

The following table summarises the summative and formative practices, which take place in this school.

Summative Assessment (Measuring Attainment)	Formative Assessment (Enabling Achievement)
Statutory tests	Clarifying learning objectives and success criteria at the planning stage
Non-statutory 'optional' tests	Sharing learning objectives and success criteria with students
External examinations	Appropriate and effective questioning
Deciding teacher assessment levels	Focusing oral and written feedback around the learning objective
Recall questions which establish current knowledge	Raising student efficacy





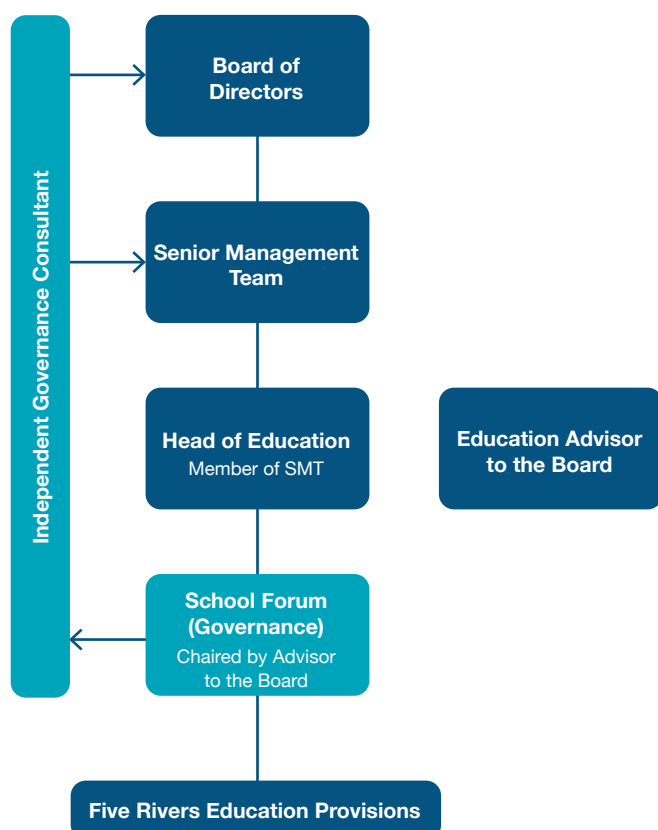
# The school forum

On a termly basis, a school forum convenes at Five Rivers Child Care's Head Office in Salisbury. This meeting forms part of our governance arrangements and has a set agenda.

The school forum is made up of a number of people from within Five Rivers Child Care and independents, with some members being regular attendees, and others attending as and when necessary.

Members include:

- Education Senior Leaders
- Heads of education provisions
- Key members from other Five Rivers Child Care departments are also invited



# Policies

## Admissions

Children can be admitted from the age of 6 years old and can be educated at Willow View School until 18 years old. The Key Stage 5 provision is to support emotional growth, retake GCSE examinations or entry level certificates in readiness to support a transition to college or the world of work.

Pupils are referred to the school from the local education authority, social care, SEN department. Local schools and academies can buy places for their pupils who will then be dual registered or will remain on the role of their main school. Full time and part time packages are available. Parents can request a place at the Willow View School but must secure funding from the local authority.

Due to the highly vulnerable nature of our pupils a risk matching process for all new applicants to the school is undertaken. If the risk assessment of the addition of new pupils would put existing pupils at excessive risk then a place could not be offered at that time but may become available if the risk assessment changes significantly.

## Safeguarding procedure

Willow View School implements strict safeguarding procedures and all staff are subject to rigorous background checks which are routinely updated. All DBS certificates are seen and identification documents, proof of address, etc are held both at Willow View School and at our central HR department. An active policy of whistle blowing is encouraged amongst all staff. The full safeguarding policy is available on request.

“Jamie\* said he was really enjoying his lessons... He said he understood the work and had been given positive feedback... Jamie gave Five Rivers 10/10!”

**Feedback from Social worker**

*\*Real name not used*

## Behaviour

We have clearly defined expectations for behaviour at Willow View School which include areas such as:

- Treating others and yourself with respect
- Being in school on time
- Trying your best to improve
- Respecting property

Full policies are available on request and can be found on the website.

The behaviour policy at Willow View School is implemented by all adults who work at Willow View School and is done in a consistent and fair manner. Expectations of student behaviour and formal uniform are explained clearly and thoroughly when a pupil enrolls.

## Exclusions

Willow View School acts to champion the right of all children to receive a high quality education. We work therapeutically with any child at risk of exclusion to overcome any barriers to learning through skilled problem solving with a range of partners. A timetable intervention of teaching base, teaching team, timetabled hours and timetable content are recognised strategies to support them to better build resilience and manage behaviours. All are used appropriately and with whole of school discussion and support.

## Complaints procedure

Willow View School has a robust complaints procedure where any complaints made are taken with the utmost seriousness and investigated accordingly. Willow View School and Five Rivers Child Care have a complaints policy and procedure which is available on request.

## English as an Additional Language

Specialist teaching of EAL involves supporting the learning of English within the curriculum for children and young people who do not have English as their first language. Usually these children and young people are new to the English language.

**Willow View School**

Further details are available on request

**Headteacher:** Colin Douro | [Colin.Douro@five-rivers.org](mailto:Colin.Douro@five-rivers.org)

**Proprietorial Body:** Five Rivers Child Care

**Chair:** Rachel Lambert

If you would like to discuss a placement within our Education service,  
please contact our referrals team for more information: **0800 3898708** (Option 3)



Head Office: Five Rivers Child Care Limited  
47 Bedwin Street, Salisbury, Wiltshire SP1 3UT

**0800 389 8708**  
[education@five-rivers.org](mailto:education@five-rivers.org)  
[five-rivers.org](http://five-rivers.org)